



# AEROS 2

Volume of water: **9.2 Gallon**  
Surface area of fire: **5.4 ft<sup>2</sup>**  
Flame height: **up to 4.9 ft**

## COMPACT WITH POWERFUL FLAMES

### FIRE PAN WITH WATER

- ▶ Impressive oil-slick fire effect: The water allows the fire to spread evenly across the entire surface of the pan
- ▶ Produces powerful realistic flames rising to a height of up to 4.9 ft
- ▶ 10-position flame height control
- ▶ Intense heat radiation, can be felt on the skin
- ▶ Works with all types of fire extinguishing equipment: all types of fire extinguishers, nozzles, foam units etc.

### A FUNCTIONAL FIRE PAN

- ▶ Tilting legs make pan easy to drain
- ▶ Increased ground contact area enables use on loose ground

### TRAIN IN COMPLETE SAFETY

- ▶ Wired remote control for control of the fire (ignition and extinction)
- ▶ Integrated solenoid valve for automatic and instantaneous gas control

### GAS SUPPLY

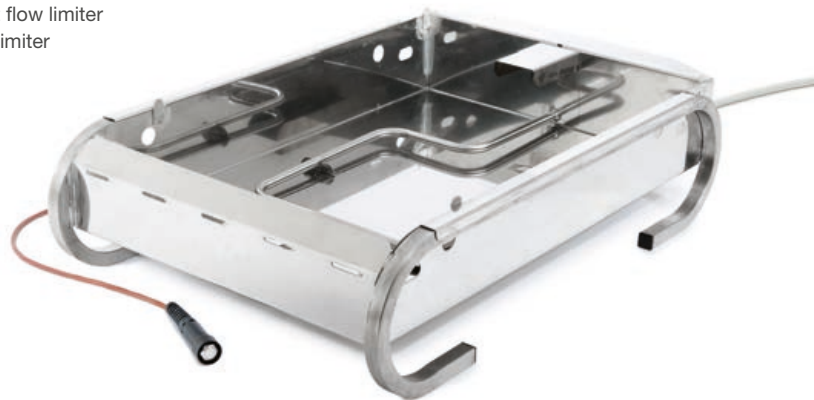
- ▶ From an industrial-type propane gas bottle without flow limiter
- ▶ From two domestic propane gas bottles with flow limiter

*Other gas supply: consult us*



### KEY POINTS

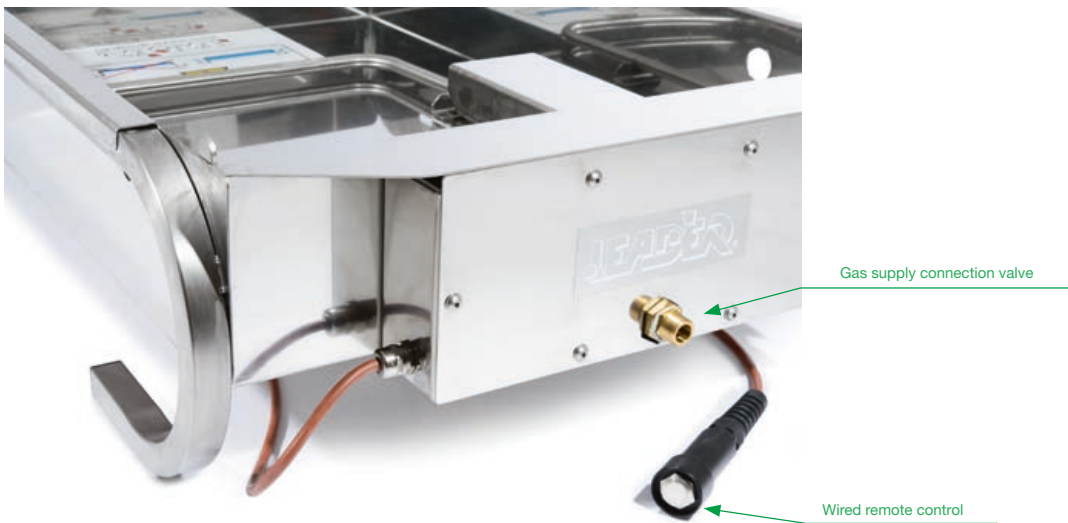
- ▶ Impressive oil-slick fire effect
- ▶ Easy to transport
- ▶ Integrated safety solenoid valve for automatic and instantaneous gas control



# TECHNICAL CHARACTERISTICS

<b>AEROS 2 fire pan with water</b>	<b>V90.00.036</b>	- Material: 304 stainless steel - Dimensions : L 38.4 x D 24.8 x H 9.5 inch - Weight: 45.9 lbs - Built-in rechargeable 12V battery.
<b>Wired remote control</b>		- Hand-held fire initiation and extinguishing by protected push button - 19.7 ft fire resistant electric cable (standard IEC 331)
<b>Armoured gas supply hose</b>	<b>V90.80.057</b>	- 19.7 ft flexible connector to standard EN 559 with pressure reducing valve - Flowrate: 44 lbs/h - Connects to industrial type propane gas bottle without flow limiter
<b>Basic kit: V90.00.061</b>		

**Fire pan and gas supply warranty: 1 year**



## OPTIONAL ACCESSORIES



### 2 domestic bottles kit

**Réf : V90.80.082**

To connect 2 domestic Propane bottles with integral flow limiter



### Quick coupling kit

**Ref : V90.80.058**

For quickly and easily connecting the flexible connector to the fire pan.



### Annual maintenance

Essential for long-term safe use.

**3-year contract**

*As part of our policy of constant research to improve our products, we reserve the right to modify our products' technical characteristics at any time without notice. Images not contractual.*