



# TEMPEST Tic 4.3X NFPA

High Resolution Thermal imaging camera



## Efficient and versatile = 3 buttons + 4" display

Particularly suitable for the First attack. LEADER TIC 4.3X offers unbeatable value and best quality, combined with all important features: ideal for firefighting, first attack, search for missing persons and fire...



### Outstanding features:

- Compact 7.09 x 6.02 x 4.13 inches
- Lightweight 2.25 lbs with 2 batteries
- Large 4" display for detailed visibility
- Widest detection range: -40°F to +2100°F
- Video recording, picture capture and image freeze
- Batteries: 6 year warranty, 5000 charging cycles
- Safe batteries (LiFePO4): for high temp operations
- Up to 8h running time (2 batteries) with integrated Eco-Boost-System
- Germanium window to protect the optics
- Removable Pistol grip option
- Boot time: less than 5 sec
- 3 Large buttons: easy to operate even with gloves

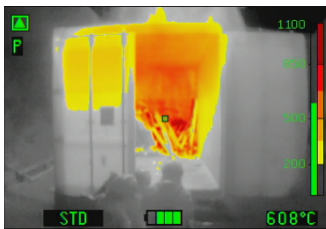


NFPA 1801:2018

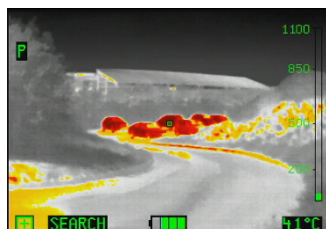


### Color schemes:

Tempest TIC 4.3X offers 3 color schemes as standard: Fire, Search, and Inverse  
+2 color schemes as option: Cold Finder and Multicolor



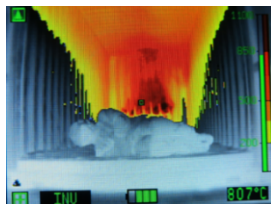
**STD / FIRE:**  
 Dark Red >1560°F  
 Red > 1250°F  
 Orange > 930°F  
 Dark Yellow >660°F  
 Yellow > 400°F  
 White = Hot  
 Black = Cold



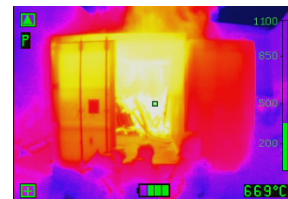
**SEARCH:**  
 2 hottest % colored in Red  
 and the 5 following hottest %  
 in Yellow-Orange.



**COLD Finder:**  
 Blue color  
 for coldest  
 areas



**INVERSE:**  
 Same as Fire  
 scheme but  
 White & Black  
 are inversed:  
 White = Cold  
 Black = Hot



**MULTICOLOR:**  
 For Industrial  
 applications

### 3 Sensitivity modes with automatic switch according observed scene:

- High sensitivity temperature range: -40 +300°F
- Medium sensitivity temperature range: -40 + 950°F
- Low sensitivity temperature range: -40 +2100°F

# Characteristics:

Leader TIC 4.3X with Eco-Boost-System	
<b>Dimensions</b>	L7.09 x W6.02 x H4.13 inches (H = +4.33" with optional pistol grip)
<b>Weight</b>	2.25 lbs with 2 batt / 2.06 lbs with 1 batt (+0.37 lbs with optional pistol grip)
<b>Display</b>	4" LCD / 320 x 240 (76.800) px / Backlighting / Brightness: 800 cd/m <sup>2</sup>
<b>Frequency</b>	60Hz Fps
<b>T°C Range</b>	-40° to +2100°F
<b>Colorization</b>	Std: Fire, Search, Inverse Option: Cold finder and Multicolor
Housing	
<b>Material</b>	PUR / Elastomer housing with silicone boot around display
<b>Drop Test</b>	6.5ft on concrete
<b>IP</b>	IP67 / 3.2ft Meter 30 Minutes
<b>Heat resistance</b>	300°F for 15min / 500°F for 5min
Sensor	
<b>Micro bolometer type</b>	Uncooled 17μ Amorphous Silicon aSi Resolution <b>384 x 288</b> (110 592 px)
<b>Spectral range</b>	7 – 14 μm
<b>Thermal sensitivity</b>	NETD: <50mK (<0.05°C)
Optic	
<b>Material</b>	Germanium Carbon Coated Protected by a germanium window
<b>Focus</b>	1.15ft to infinity / F/1.3 speed
<b>Visual field / FOV</b>	H: 51° / V: 40° / Diagonal: 65°

General	
<b>Rechargeable batteries</b>	LiFePO <sub>4</sub> (Lithium Iron Phosphate = safety VS fire), 2.5Ah at 6.6V, 0.19lbs
<b>Running time</b> (20°C) with Eco-Boost-System since October 2018	<b>Without video/photo functions:</b> >8h (2 batt) / >4h (1 batt) <b>With video/photo functions:</b> >6h (2 batt) with non-active video >5h (2 batt) with recording video
<b>Boot time</b>	< 5 seconds
<b>Charging voltage</b>	12-24 VDC or 100-240 VAC
<b>Charging time</b> (for 2 batt / half for 1 batt)	Charging bay: ~1h30 Mains charger: 100% in ~2h, 90% in ~1h30, 80% in ~1h20
<b>Charging cycles</b>	> 5000
<b>Memory (optional)</b>	8GB internal SD card (8h video or 1000 pics)
<b>Warranty</b>	<b>5 years</b> on camera / <b>6 years</b> on batteries / <b>10 years</b> on thermal sensor / <b>1 year</b> on accessories (chargers, charging bay, etc...)
<b>Certifications</b>	NFPA1801:2018 and ISA12.12.01 / CSA C22.2 N°213 and CE
Options	
Removable pistol grip	Picture capture and/or video recording (8GB capacity)
Neck strap in flame retardant material	Vehicle charging bay or mains charger
1 or 2 Retractable lanyards	Carrying case IP67
Protection hood	Wireless video transmission to computer, tablet or smartphone



## Energy concept

LiFePO<sub>4</sub> batteries (lithium-iron-phosphate).

### Benefits:

- Very long lifespan guaranteed 5000 charging cycles (~10 years)
- Operating time (8h with 2 batteries at the same time in the camera)

## Picture capture & Video recording

Pictures (up to 1000) and Video (up to 8h) can be:



- Viewed on the camera screen during operation
- Live Pictures can be sent to a computer, tablet or smartphone thanks to optional wireless stick.
- Downloaded into a computer via a USB cable



Wlan module

## Vehicle Charging Bay

Very space-saving mountable!  
Power supply 12/24 VDC or 100-240 VAC. Can charge up to 4 batteries at the same time (2 in the camera and 2 spares)



## Camera standard features:



Description	Color modes			Features								
	Color modes	Optional color modes	Max color modes	Battery	Freeze mode	Side trap	Video recording	Picture capture	Laser	Zoom	USB cable	
LEADER TIC 4.3X	Fire & Search & Inverse	Multicolor or Cold	5	2	√	No, but available attachment points for zippers and/or neck strap					√	
LEADER TIC 4.3X L			5	2	√				√	√		
LEADER TIC 4.3X V			5	2	√		√	√		√	√	√
LEADER TIC 4.3X VL			5	2	√		√	√	√	√	√	√

V= Video + Picture  
L = Laser

## Camera optional accessories:

	<b>Wireless Transmission kit (to come)</b>	<b>Only compatible with cameras equipped with Video recording</b>		<b>Vehicle charging bay with additional slots</b>	<b>Charge batteries in the camera + 2 extra spare batteries</b>
	<b>Pack of 2 spare batteries</b>			<b>Power supply for charging bay</b>	<b>Exist in 12/24V and 100V-240V with US or EU plug</b>
	<b>Cable charger</b>	<b>Available in 12/24V or 100V-240V</b>		<b>Retractable lanyard</b>	<b>1.1 lbs or 2.2 lbs tension force</b>
	<b>Watertight Carrying case</b>	<b>IP67</b>		<b>Neck strap</b>	<b>Fire-proof (Kevlar)</b>
	<b>Vehicle charging bay</b>	<b>Charge batteries inside the camera</b>		<b>Protection hood (to come)</b>	<b>Increases exposure time x2 to high temperatures</b>



Laser pointer

Only for 3.3 and 4.3 models



Removable pistol grip

Pistol grip = 0.37 lbs  
Incl. mounting tool



**TEMPEST**  
● *Fighting for performance*