



## GF42

No water  
Surface area of fire: **4.5 ft<sup>2</sup>**  
Flame height: **up to 3.9 ft**

## COMPACT & LIGHTWEIGHT

### WATERLESS FIRE PAN

- ▶ Easy to use
- ▶ Lightweight, takes up little space
- ▶ Produces flames up to 3.9 ft in height
- ▶ 10-position flame height control
- ▶ Works with any kind of extinguishing equipment: all types of fire extinguishers, nozzles, foam units, etc.

### TRAIN IN COMPLETE SAFETY

- ▶ Fire is controlled (ignited) via remote control cable

### GAS SUPPLY

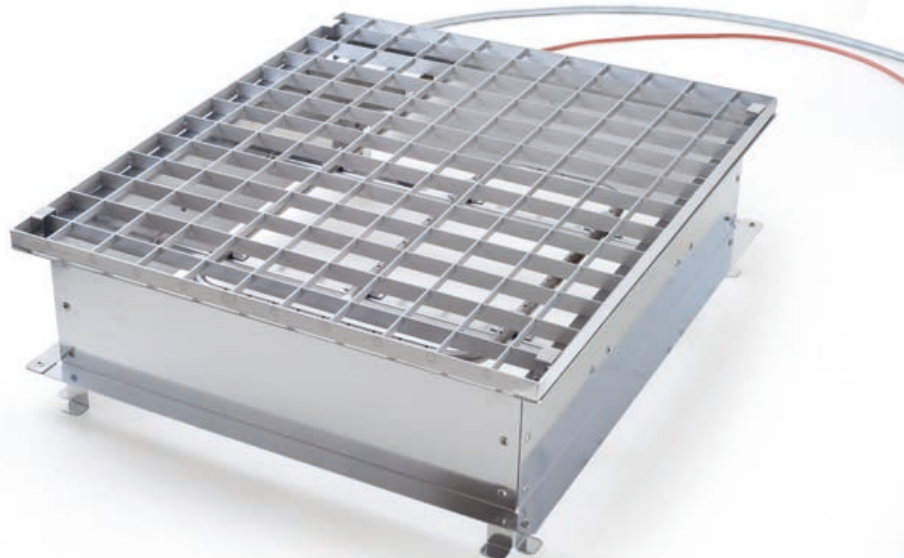
- ▶ From an industrial-type propane gas bottle with no flow limiter
- ▶ From two domestic propane gas bottles with flow limiter

*Other gas supply: consult us*



### KEY POINTS

- ▶ Easy to transport
- ▶ Quick set-up
- ▶ Simple to use




# TECHNICAL CHARACTERISTICS





<b>GF42 waterless fire pan</b>	<b>V90.00.024</b>	- Material: stainless steel - Dimensions: L 27.6 x D 24.8 x H 0.9 inch - Weight: 31.5 lbs
<b>Remote-control cable</b>		- Splash-proof housing - Push button with protection against accidental ignition - Powered by 9V-6LR61 battery (not supplied) - 19.7 ft fire-resistant electric cable (standard IEC 331).
<b>Armoured gas supply hose</b>	<b>V90.80.057</b>	- 19.7 ft flexible connector to standard EN 559 - Flowrate: 26.5 lbs/h - Connects to industrial-type propane gas bottle without flow limiter
<b>Basic kit: V90.00.050</b>		

**Fire pan and gas supply warranty: 1 year**

## VARIANT for better control of the fire

	<p><b>GF42 pan + solenoid valve module</b></p> <p>Kit contents:</p> <ul style="list-style-type: none"> <li>- 1 x GF42 pan</li> <li>- 1 x wired remote control with push button</li> <li>- 1 x solenoid valve module housing and its 12V battery,</li> <li>- 1 x gas pressure reducing valve for 1 gas bottle and associated supply flexible connector</li> <li>- 1 x charger</li> </ul>
<b>Ref : V90.00.038</b>	

## OPTIONAL ACCESSORIES

			
<p><b>Solenoid valve module</b></p> <p><b>Ref : V90.80.076</b></p> <p>For automatic instantaneous gas control.</p>	<p><b>2 domestic bottles kit</b></p> <p><b>Réf : V90.80.082</b></p> <p>To connect 2 domestic Propane bottles with integral flow limiter</p>	<p><b>Flexible connector</b></p> <p><b>Ref : V90.80.051</b></p> <p>With safety pedal.</p>	<p><b>Annual maintenance</b></p> <p>Essential for long-term safe use.</p> <p><b>3-year contract</b></p>

*As part of our policy of constant research to improve our products, we reserve the right to modify our products' technical characteristics at any time without notice. Images not contractual.*